

# A VISUAL SYSTEM TO CAPTURE IMPROVEMENTS AND TRACK PROCESSES IN MANUFACTURING

SIMPRESS is a visual based knowledge acquisition and application tool tailored for manufacturing. The SIMPRESS process captures and develops an organisation's knowledge base in order to:

- reduce time to market
- aid problem solving
- improve launch performance
- incorporate future improvements
- reuse lessons learnt and best practice

**Record Issue:** performed quickly and intuitively, from shop floor operators to design engineers, by making efficient use of images and photos.

**Collaborate:** enable more effective problem-solving across departments and activities.

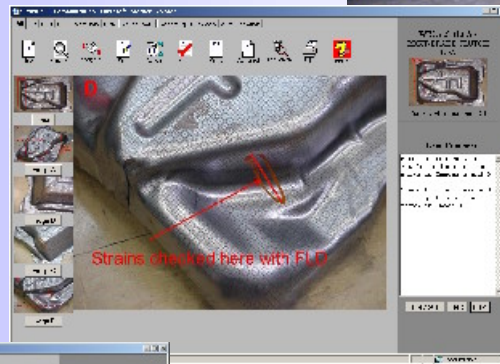
**Solution**



**Solution:** generate and record solutions by using part histories and reports to:

- track concerns
- provide management metrics
- generate reminders and prompts
- allocate resources

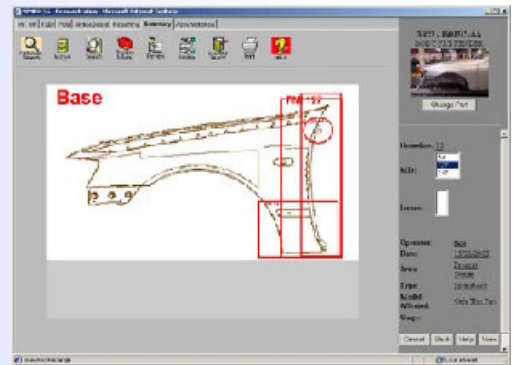
**Record Issue**



**The SIMPRESS Acquisition and Application Process**

**Collaborate**

**Future Reuse**



**Future Reuse:** learn from your organisation's experiences and designs to:

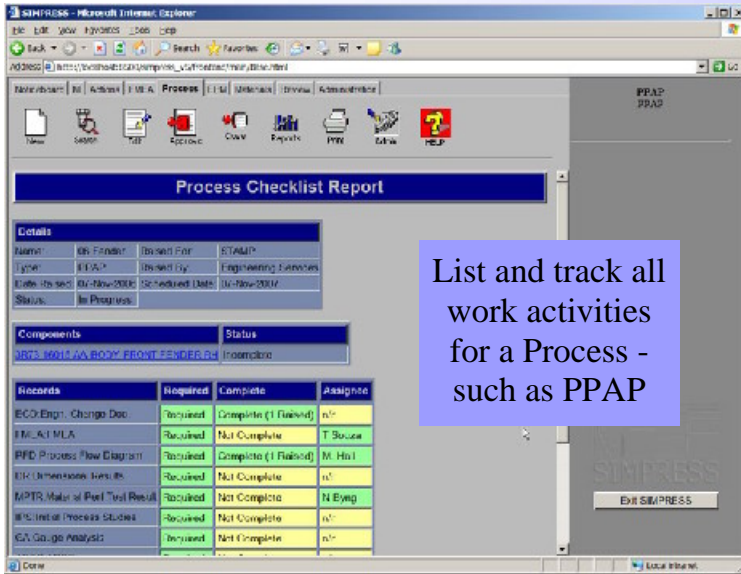
- apply what worked
- avoid what did not
- support continuous improvement
- generate solutions to current problems based upon previous issues



# ◆ PROCESS CHECKLIST

## ◆ PROCESS MAPPING

### ◆ NOTICEBOARD



List and track all work activities for a Process - such as PPAP

### Process Checklist

SIMPRESS can be used to customize industry specific processes and track those processes including:

#### PPAP

Track part approval to ensure all documentation is completed

#### Buy-off

Record changes and approvals during buy-off

#### Quality Standards

Enable compliance with activities, processes and documentation

#### Problem Solving

Ensure concerns are recorded, options identified and resolutions completed

#### Product Development

Specify activities, documentation and reviews to be completed before stage gates

### Engineering Process Module

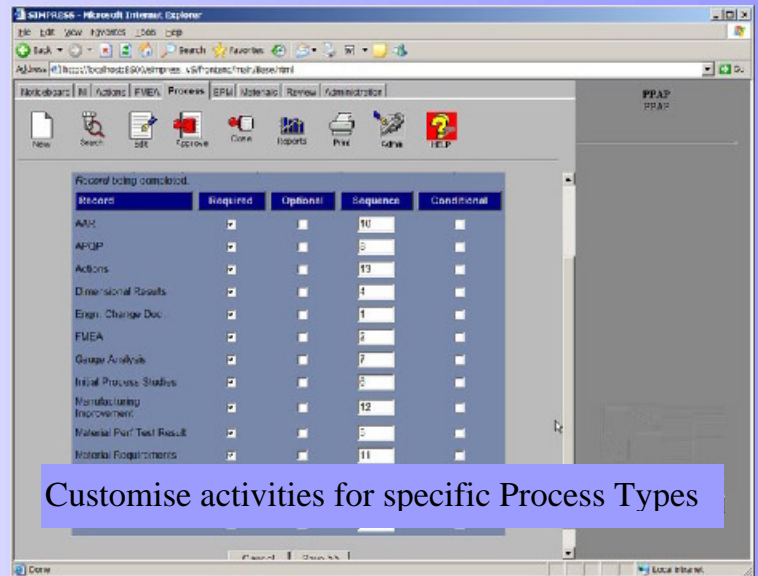
Central storage of internal and external documentation such as material specifications, industry and quality standards, technical manuals and environmental controls.

### Data Base Searching

Status of process progress, checklists and parts.

### Complimentary to Existing Systems

Smart links to spreadsheets and stand alone internal data bases.



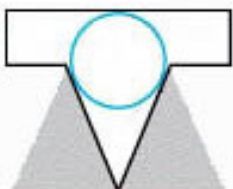
Customise activities for specific Process Types

### Process Mapping

SIMPRESS is a web-based tool, enabling easy access and rapid, organisation wide deployment. It is available on common infrastructures.

#### Requirements:

Webserver, such as IIS, ColdFusion Application Server DBMS including MySQL, Microsoft SQLServer, IE 5+, Java Runtime Environment (Java Plugin)



**Technology Management Services Pty. Ltd.**

P.O. Box 532, Bacchus Marsh,  
Victoria, 3340, Australia  
Phone: +61 3 5367 3403

[brian.gaffney@technologymanagement.com.au](mailto:brian.gaffney@technologymanagement.com.au)  
[www.technologymanagement.com.au](http://www.technologymanagement.com.au)  
Fax: +61 3 5367 1685